

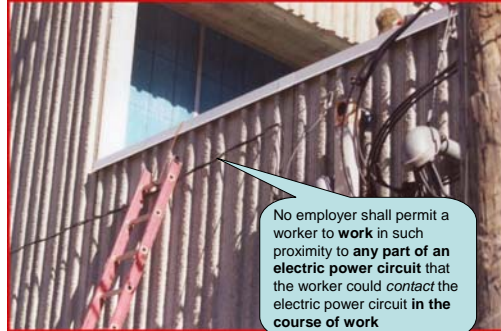
Electrocution Hazards – Hazard Recognition Presentation Instructor Copy

Recognize Any Hazard(s)?



1

Yes



No employer shall permit a worker to **work** in such proximity to **any part of an electric power circuit** that the worker could **contact** the electric power circuit in the course of work

2

Recognize Any Hazard(s)?



3

Yes



Crossing electrical line must be supported, protected or removed to safeguard workers

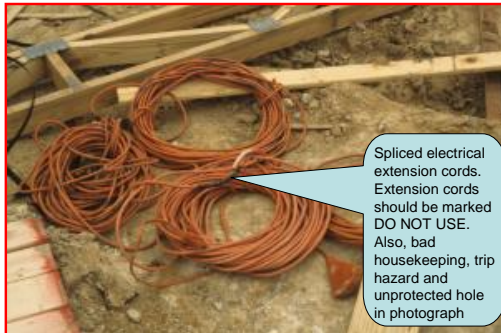
4

Recognize Any Hazard(s)?



5

Yes



Spliced electrical extension cords. Extension cords should be marked **DO NOT USE**. Also, bad housekeeping, trip hazard and unprotected hole in photograph

6

Electrocution Hazards – Hazard Recognition Presentation Instructor Copy

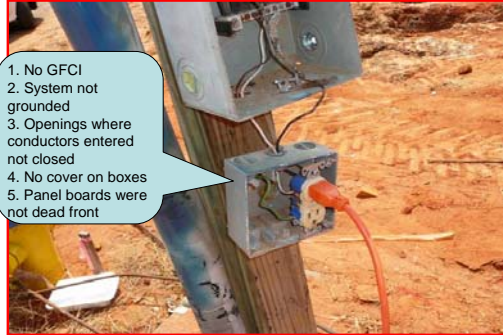
Recognize Any Hazard(s)?



7

YES

- 1. No GFCI
- 2. System not grounded
- 3. Openings where conductors entered not closed
- 4. No cover on boxes
- 5. Panel boards were not dead front



8

Recognize Any Hazard(s)?



9

YES

Electric drill flexible cord was spliced to a non-flexible conductor with damaged insulation



10

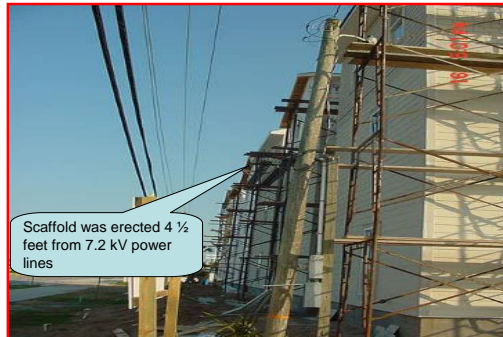
Recognize Any Hazard(s)?



11

Yes

Scaffolding was erected 4 1/4 feet from 7.2 kV power lines



12

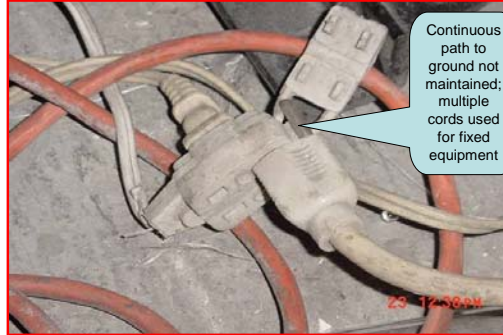
Electrocution Hazards – Hazard Recognition Presentation Instructor Copy

Recognize Any Hazard(s)?



13

YES



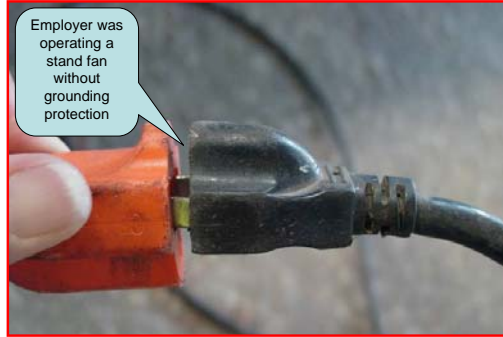
14

Recognize Any Hazard(s)?



15

YES



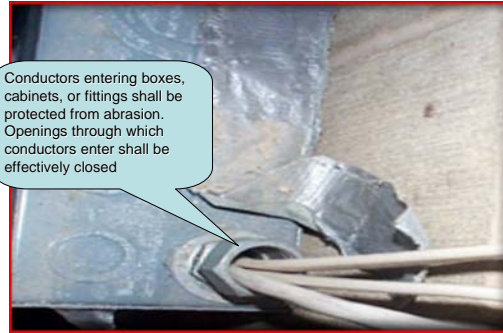
16

Recognize Any Hazard(s)?



17

Yes



18

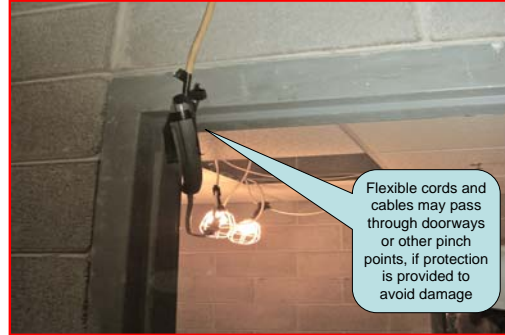
Electrocution Hazards – Hazard Recognition Presentation Instructor Copy

Recognize Any Hazard(s)?



19

Yes



20