

# Fall Hazard Recognition Instructor Copy

Is This a Fall Hazard?



Photos in this presentation are from the OSHA Region 4 National Photo Archive and OSHA Region 5.

1

YES

Workers could fall while climbing on the shoring structure to set it up and remove it.

Ladders and lifts must be provided.



2

Any Fall Hazard Here?



3

YES

Workers are exposed to a fall hazard greater than 6 feet, while working near stairwell opening.

Workers must be protected from falls over 6 feet.



4

Is This a Fall Hazard?



5

YES

Unprotected open-sided floors 6 feet or more above ground level.

Guardrail systems, safety net systems or personal fall arrest systems are required.



6

# Fall Hazard Recognition Instructor Copy

Any Fall Hazard Here?



7

YES



Workers are installing a new metal roof without fall protection.

NOTE: Remember that ladders must extend 3 feet above the landing area.

8

Is This a Fall Hazard?



9

YES

The photo shows a mid-rail and toeboard are missing on an open-sided floor of a building.

This could expose workers to a 12 foot fall.

Toeboards are required to protect workers below from falling objects.

10

Can You Identify the Fall Hazard?



11

YES

Lack of fall protection for workers on fabricated frame scaffolds.

Planks appear to be overloaded and there is no safe access for workers.

The workers are exposed to a 35-foot fall hazard from a scaffold while stacking blocks prior to overhand bricklaying operations.

12

# Fall Hazard Recognition Instructor Copy

Can You Identify the Fall Hazard?



13

YES

Ladder to work platform is not of sufficient length.

It must extend 3 feet above the working surface.



14

Is This a Fall Hazard?



15

YES

Worker is working off of the top of a step ladder.

The top of a stepladder shall not be used as a step.



16

Can You Identify the Fall Hazards?



17

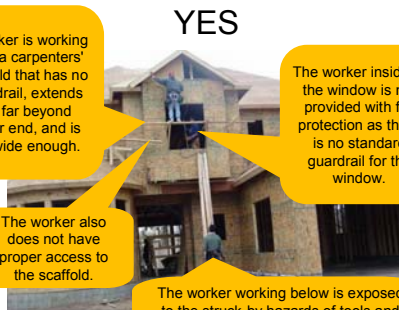
YES

A worker is working from a carpenter's scaffold that has no guardrail, extends too far beyond either end, and is not wide enough.

The worker inside of the window is not provided with fall protection as there is no standard guardrail for the window.

The worker also does not have proper access to the scaffold.

The worker working below is exposed to the struck-by hazards of tools and equipment falling from the employees working above.



NOTE: A competent person must supervise as scaffolds are erected, moved and taken apart.

18

# Fall Hazard Recognition Instructor Copy

Any Fall Hazard Here?



19

YES



Workers working on balcony of structure exposed to fall hazard due to unprotected side/edge.

20

Is This a Fall Hazard?



21

YES



Worker working on an 8:12 pitch roof with only the lifeline tied to his waist as fall protection.

Employer must provide full body harnesses.

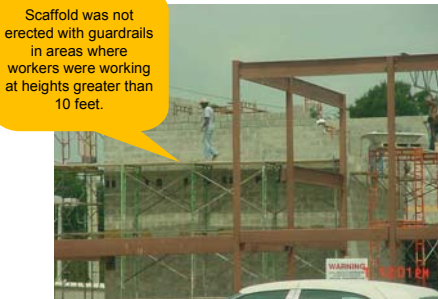
22

Is This a Fall Hazard?



23

YES



Scaffold was not erected with guardrails in areas where workers were working at heights greater than 10 feet.

24