

OSHA Summer Summit

Tuesday ▪ June 13, 2017
Summer Summit Schedule At A Glance



7:30-8:00	Registration					
8:00-8:15	Opening Remarks & Welcoming Address University of Massachusetts Amherst					
8:15-9:15	Keynote Address Jeffrey Erskine- Deputy Regional Administrator, Region 1 OSHA					
9:15-9:45	Visit Vendors					
	Auditorium	11 th Floor Marriott	Room 163C	Room 162-175	Room 165-169	Room 168C
9:45-10:45 Concurrent Session 1	Foundations of Safety Leadership <i>Bob Kunz</i>	Industrial Hygiene Case Study <i>Crystal Joshua</i>	Basic Electrical Safety <i>Randy Yandow</i>	Ergonomics Part 2 to 2016 Session <i>Louise Lynch</i>	Recordkeeping Rule <i>Andrew Palhof</i>	Is your business at risk? Terrorism in the Workplace <i>Bob Zalewski</i>
10:45-11:00	Break/Visit Vendors					
11:00-12:00 Concurrent Session 2	Walking and Working Surfaces <i>Mark Heffron</i>	Ladders and Scaffolding <i>Kimlee Lindgren</i>	Industrial Hygiene 101 <i>Mike Cashins</i>	Case Study: The Fissured Workplace <i>Bob Carbone</i>	Safari Risk Assessment - Learning Situational Awareness <i>Alden Davis</i>	Transitioning to Safer Chemicals <i>Steve Gauthier</i>
12:00-12:45	Lunch/Visit Vendors					
12:45-1:45	The Rest of the Story – Kerry Sue O’Riley					
1:45-2:15	Visit Vendors					
2:15-3:15 Concurrent Session 3	OSHA New Silica Standard <i>Lisa Sullivan</i>	Process Safety Management <i>Gabe Porter Fred Malaby</i>	New Technology and Applications - Industrial Scientific <i>Dave Wagner</i>	Work Zone Safety <i>Steve Piwowarski</i>	Preparing for an OSHA Inspection <i>Paul Mangiafico</i>	Reasonable Suspicion – Drugs <i>Terry Choates</i>
Demonstrations 3:15-4:00 outside	Industrial Safety & Rescue-Confined Space Demonstration Trailer		FallTech Fall Protection Demonstration Trailer		Eversource Demonstration Trailer	

 Emergency
 Construction
 Industrial Hygiene
 OSHA
 Wellness



Meet our Presenters!



Jeffrey Erskine: *Deputy Regional Administrator, Region 1 OSHA*

Keynote: **OSHA in 2017**

Jeff's upbeat and informal style will detail what the agency will be focusing on to address emerging hazards in the workplace and how the agency plans to continue their mission of ensuring a safe and healthy workplace for all workers. **Auditorium**

Mr. Erskine graduated from the University of Massachusetts Amherst with a Bachelor of Science degree in Management. He spent several years working in the Boston building trades and Laborer's International Union of America. Jeff started with OSHA in 2001 in the Springfield, Massachusetts area office as a Compliance Safety and Health Officer, where he actively responded to the World Trade Center Disaster in his first few months of work. Prior to becoming the Deputy Regional Administrator for Region 1 OSHA, Jeff worked in the regional office as the Federal Agency Program Manager and as the Area Director in the Andover Area Office.

Concurrent Session 1: 9:45 a.m. - 10:45 a.m.



Bob Kunz - *Safety Director, Dimeo Construction*

Foundations of Safety Leadership

Bob has presented the CPWR Foundations for Safety Leadership (FSL) program to over 450 executives, safety professionals and craft workers with overwhelmingly positive response. This session provides executive level overview of the FSL and discussion of 5 critical leadership skills and real-world scenarios which promote safe, healthy, productive and quality driven outcomes. **Auditorium**

Bob Kunz is currently the Corporate Safety Director at Dimeo Construction Company's Providence office, overseeing the creation and enforcement of the project safety program for each project. As part of this position, he performs unannounced OSHA-type inspections on projects and closely monitors abatement procedures for each and every violation. He has been employed with Dimeo since 2007. Bob was named the 2012 Construction Safety Professional of the Year by the Associated General Contractors of Connecticut.



Crystal Joshua - *Industrial Hygienist, OSHA*

Hexavalent Chromium-Case Study

Hexavalent chromium is a man-made toxic form of the element chromium, classified as a known carcinogen, widely used in many different industries. Crystal's talk will discuss two recent OSHA inspections in which hexavalent chromium exposures were detected during painting operations and stainless steel welding operations **11th Floor Marriott**

Crystal Joshua is a Senior Industrial Hygienist with the US-DOL OSHA in Hartford, Connecticut where she has worked since 2011. She has conducted over 200 safety and health inspections in both construction and general industry environments. Previously, she worked as an Engineering Assistant with The City of Lafayette, IN. She received a BS in Civil Engineering from the University of Akron, with a focus in Environmental Studies.



Randy Yandow - *OTI Education Center, Region 1*

Basic Electrical Safety

During this presentation you will learn and understand the effects of shock and arc flash on the human body, practices to prevent incidents like shock and arc flash from happening and the basics of PPE and the requirements for using it. You will leave with a better understanding of what is required of employees and that of the employer as well as the basics in managing your risk. **Room 163C**

Randy began his electrical career in 1985 as an electrical apprentice for the IBEW. In 1991, he became a licensed Master Electrician and worked for a local union contractor in Vermont. He worked for IBM as a contractor, primarily in the industrial field, before being hired to work in their high voltage department. Randy attended specialized training at the AVO Institute in Dallas, Texas and at the University of Tennessee, becoming a 3rd year instructor in the IBEW Apprenticeship Training Program, teaching industrial motor controls, semiconductor electronics, safety and PLCs. Recently he joined Workplace Safety Solutions, Inc. and is adjunct faculty with OTI Educational Center Region 1/Keene State College.



Louise Lynch - *PT, CEES- Owner of IHMS*

Ergonomics & the Aging Workforce II

Ergonomic Risk Factors in Relation to Workers over 40, Strategies to slow the Aging Process, Designing for the Older Worker. This workshop is designed to teach you how the body ages and how to ergonomically design your workplace so that it is safe for workers over 40. It will also teach you strategies that will help slow the aging process and keep employees healthy throughout their working career. **Room 162-175**

Louise Lynch is the owner of IHMS, a company that serves as a resource to employers on injury prevention, ergonomics, health promotion and industrial rehabilitation. She is an international speaker. Her active trainings engage participants and motivate them to take responsibility for their well-being and better "interface" with their work.



Andrew Palhof - CAS, OSHA Region 1, Concord NH

OSHA Recordkeeping

Andy is the Compliance Assistance Specialist for Concord NH OSHA. His presentation will detail OSHA Requirements for Improved Tracking of Workplace Injuries / Illnesses as well as Policies and Practices for Safety Incentives, Disincentives and Drug Testing.

Room 165-169

Andy's primary responsibilities are to conduct OSHA's Voluntary Protection Program Audits (VPP), coordinate and conduct training and outreach programs, while providing technical support for OSHA's compliance and outreach efforts. Prior to becoming the Compliance Assistance Specialist, Andy worked as an OSHA Compliance Officer in Syracuse NY and Concord NH. Prior to working for OSHA, Andy worked as a Safety Consultant for the NH OSHA Consultation Program, assisting employers with complying with OSHA requirements.



Bob Zalewski - NHCOSH, TNEC, UMass Lowell

Terrorism in the Workplace

Is your business at risk? Bob's talk will discuss preparation, planning and response to potential serious events including; insider attacks, cyber security and terrorist threats. Are you really prepared?

Room 168C

Bob is a career firefighter in his 40th year of service, and a hazardous materials technician/specialist and a member of the Commonwealth of Massachusetts Hazardous Materials Regional Response Division. Bob is also a Hazardous Materials/WMD Specialist with the Department of Homeland Security's FEMA Urban Search and Rescue Task Force (MA-TF-1). Bob is an Assistant Coordinator for the Hazardous Materials Counterterrorism Training Branch, an Instructor for the Massachusetts Firefighting Academy, and an adjunct Instructor for the National Fire Academy in Emmitsburg MD.

Concurrent Session 2: 11:00 a.m. - 12:15 p.m.



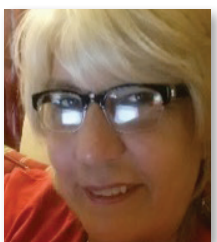
Mark Heffron - Technical Support Specialist, OSHA

Walking Working Surfaces

Falls from heights and on the same level (a working surface) are among the leading causes of serious work-related injuries and deaths. OSHA has issued a final rule on Walking-Working Surfaces and Personal Fall Protection Systems to better protect workers in general industry from these hazards. This presentation will illustrate how the Final Rule incorporates advances in technology, industry best practices, and national consensus standards to provide effective and cost-efficient worker protection.

Auditorium

Mark has been an Environmental Health & Safety professional in construction, general industry, transportation and environmental industries since 1979. Presently he is the Sr. Safety and Health Specialist & Emergency Management Coordinator OSHA Region 1 Boston Office, providing enforcement and technical support throughout the Region 1 New England area. He currently serves as the Region 1 Subject Matter Expert in fall protection and as the primary liaison to federal, state & local, government agencies.



Kimlee Lindgren, M.S.

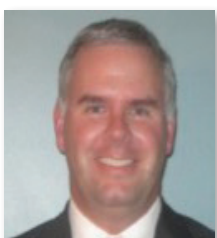
Scaffold & Ladder Issues - Top 25

Safety & Health Consultant - OTI Education Center Region 1

Scaffolding and ladder hazards continue to be on the list of OSHA's top cited violations. Kimlee's session will identify scaffold and ladder issues with a focus on the top 25 hazards and associated controls. This presentation will be "chock-full-of information!" Don't miss it.

11th Floor Marriott

Kim Lindgren is a safety and health consultant with over 34 years of experience. She currently is the lead instructor for construction and maritime at the Region 1 OTI Education Center. Previously, she served for 20 years as the Construction Curriculum and Industry Director for the OTI Education Center in San Diego. Her expertise is in construction with previous employment with general contractors, specialty contractors, insurance companies and trade associations. She is a Professional Member of the ASSE and a past president of the San Diego Chapter.



Mike Cashins - CIH

Industrial Hygiene 101

Michael's talk will cover IH Issues in both the general industry and construction environments. The topics will cover new industrial paints, mold, and asbestos issues. The focus will be on issues not commonly recognized. A case study will be presented in each area.

Room 163C

Mr. Cashins has a Bachelor Degree in Safety & Occupational Health Applied Sciences from Keene State College. He is a Certified Industrial Hygienist, who has been practicing industrial hygiene for 23 years. He is the Manager of Industrial Hygiene Services at Cashins & Associates, Inc. In this capacity he directs the technical staff, heads the marketing efforts, develops cost proposals and provides client consultation. In his 23 years he has worked with clients in many industries including manufacturing, construction, hospital, research laboratories, academic campuses, pharmaceutical, and real estate. His breadth of experience provides a unique perspective into a variety of industrial hygiene and safety issues.

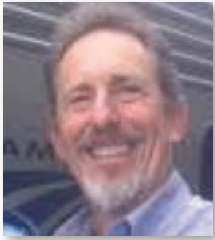


Robert Carbone - Assistant Area Director, OSHA Region 1

The Fissured Workplace

In 2016, two employees were seriously injured when the bracket scaffold system they were working on collapsed. Bob will discuss the accident and the OSHA investigation that followed. The investigation revealed involvement from two different companies -- so who are the real employers and who was responsible for the safety and health of the workers on the site? **Room 162-175**

Bob is a Licensed Electrician who worked for over 25 years with IBEW Local 103 on large commercial Boston projects including the Central Artery Tunnel and Deer Island. Bob was an instructor for the IBEW for over 14 years and joined the Andover OSHA Office as a Safety Specialist in 2007 and has been the Assistant Area Director for the Construction Industry Group in Andover since 2010 specializing in incidents that require in-depth knowledge of electrical safe practices (NFPA 70E) OSHA, ANSI, NFPA 70 and other electrical standards.



Alden Davis

Safari Risk Assessment-Learning Situational Awareness from the Savannah

RISK elimination is the number one priority for population groups living in the Savannah. They are specialists at monitoring their environment with finely defined approaches to hazard identification coupled with defined roles, clear communications, clear priorities and clear plans. Failure means they are dinner! Come on Safe-ari™ and learn as we tour key concepts of situational awareness and risk mitigation. **Room 165-169**

Alden is a specialist in regenerating institutions. Over 30 years of global expertise in industry, he designs, orchestrates and leads large-scale change. His focus is financially-based change, business turnarounds, collaborative labor-management change and leadership development. Alden is a contributor on WTIC Newstalk radio on personal motivation. He is degreed in Business/Engineering from ASU, holds 2-patents and lives in Avon, CT.



Steven Gauthier

Transitioning to Safer Chemicals

An organization's transition to safer chemicals success depends increasingly on the knowledge, skills, innovation, and workforce motivation. Organizations need to invest in the development of their workforces through education, training, and opportunities for continuing growth, such as enhanced transition to safer chemicals awareness. Transitioning to safer chemicals offers a competitive advantage over other companies that aren't making the effort. **Room 168C**

Employed at General Electric Company in Lynn MA for 38 years as a machinist in their manufacturing sector, Mr. Gauthier is a national spokesperson for the National Blue Green Alliance in Washington, DC and an OSHA Special Government Employee (SGE) for OSHA's Voluntary Protection Program (VPP). He is also member of the Massachusetts Advisory Committee on Toxic Use Reduction IUE/CWA and co-author of the National Certified Metalworking Fluids Specialist exam for the Society of Tribologists and Lubrication Engineers' (STLE).

Afternoon Keynote 1:15 p.m. - 2:30 p.m.



Kerry Sue O'Riley

Keynote: **The Rest of the Story**

On June 10th, 2015, Richard "Rob" O'Riley, a Foreman for a paving contractor, was fatally injured when he was struck by a dump truck while performing milling operations on Route 91 in Holyoke MA. His tragic death left Kerry Sue O'Riley without a husband, and their children, Shelby and Spencer, without a father. Kerry Sue has graciously agreed to speak about her family's journey after Rob's death. She will discuss the significant impact a workplace fatality had on their family and detail some of the positive changes being made in the industry to address and eliminate struck by hazards in the construction industry. **Auditorium**

Kerry Sue is a Social Worker and works as a Program Director at a residential recovery program for young women. Her two children are her greatest joy and she loves traveling with them along with spending time with family, friends, and her two beagles!

Concurrent Session 3: 2:45 p.m. - 3:30 p.m.



Lisa J. Sullivan - Industrial Hygienist in OSHA Region 1

OSHA New Silica Standard

Participants will learn about OSHA's new standard for Occupational Exposure to Respirable Crystalline Silica. The dangers and health risks of silica exposure will be described, and the requirements for Construction, as well as General Industry and Maritime, will be explained. The phase-in period and effective dates for various aspects of the standard will be covered during this presentation **Auditorium**

A 1983 graduate of Quinnipiac College in Hamden, CT with a B.S. in Industrial Hygiene, Lisa started her career with the U.S. Department of Labor-OSHA as an Industrial Hygienist /Compliance Safety & Health Officer in the Boston Area Office in Waltham, MA, transferred to the Concord, NH Area Office in 1987, where she continued as an IH/CSHO for over 30 years. Presently she is the Regional Industrial Hygienist in the Boston Regional Office in the Enforcement Programs/ Technical Support (EPTS) section, and presents several programs about OSHA's new Silica Standard.



Frederick Malaby - CIH, CSP
Gabriel Porter - Technical Support Specialist, OSHA Region 1

Process Safety Management and Safety Systems Best Practices

Many facilities store chemicals in quantities that require them to comply with OSHA's process safety management (PSM) requirements. Many companies also process quantities that fall below those thresholds so they still need to protect their employees from the risks associated with those chemicals. We will review the PSM standard and also best practices for facilities that fall below the PSM threshold quantity. **11th Floor Marriott**



Fred is currently a trainer for The New England Consortium (TNEC), where he provides hazardous waste site worker training, emergency response worker training and OSHA 10 Hour Construction Worker Training. Previously, Fred spent 40 years working for OSHA Region 1 as an Industrial Hygiene Compliance Officer, Regional Industrial Hygienist and Region 1 Emergency Preparedness Coordinator.

Gabe is a graduate of Northeastern University with a B.S. in chemistry and a minor in environmental science. He started his career with a hazardous waste disposal company and was later an EHS consultant specializing in hospitals and biotech. Gabriel has been a Compliance Officer with OSHA since 2007 and in Enforcement and Technical support since 2015. He has been part many significant OSHA cases through the years and is well versed in many OSHA standards including process safety management (PSM).



David Wagner - Director of Product Knowledge at Industrial Scientific

New Technology & Applications

This presentation will explain how advancements in wireless technologies improve productivity, reduce costs, and help you empower everyone to be a safety champion. It can be difficult to imagine the ways new technology can be used within our current processes, so we will share case studies and explore the applications where new technologies are already saving money and, more importantly, lives. **Room 163C**

Dave is the Director of Product Knowledge at Industrial Scientific. In this position, Dave carries out strategies for sharing gas detection knowledge. Dave supports many teams within Industrial Scientific research, product management and outside sales. He graduated from Penn State University with a bachelor's degree in Electrical Engineering and holds an MBA in Management and Technology from Carlow University.

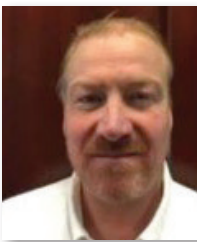


Steve Piwowarski - Division Administrator for USDOT FMCSA

Work Zone Safety Risks with Speeding

Motor vehicle accidents continue to be the number one occupationally related killer. Steve will cover driving tips and the risks associated with work zones for drivers of Commercial Motor Vehicles and discuss why CMV drivers speed and the factors in our lives that cause all drivers to operate motor vehicles at high rates of speed, putting themselves and others at serious risk. **Room 162-175**

Steve Piwowarski is currently the Division Administrator for the New Hampshire Division of the USDOT's Federal Motor Carrier Safety Administration, a modal administration within the U.S. Department of Transportation whose mission is to save lives and reduce crashes involving commercial motor vehicles on our nations highways. As an adjunct Norwich University faculty member, he has taught the Drugs and Gangs course and in 2006 he earned his Master of Justice Administration from Norwich University.



Paul Mangiafico

Knock Knock . . . OSHA's Here!

This presentation will take you through an OSHA inspection starting from the time a Safety and Health Compliance Officer arrives at your place of employment and will give you some insight into what to expect throughout the inspection process. **Room 165-169**

Paul has been in the safety and health field for 26 years. He has been a Construction Health and Safety Technician (CHST) since 1995, and an Occupational Health and Safety Technologists (OHST) since 2007. Mangiafico has been with OSHA for over 18 years and has served as a Compliance Officer and as a manager in Region I and V. Prior to joining OSHA, Mangiafico worked as a safety director and an electrician.



Terry L. Choates, Jr. - Blue U Defense

Reasonable Suspicion - Drugs

Drugs, and therefore addiction and distribution are prevalent everywhere! The problem? With addiction comes a tremendously negative impact to educational institutions, businesses and families. Recognizing potential addiction problems in employees AND family can bring tremendous advantage not only to your organization, but in helping those who suffer from addiction. Learn to recognize and understand the signs and impact of addiction, and where to look for help. **Room 168C**

Terry Choate is a full-time Lt. with a NH Police Department where he has served for the past 11 years and the Team Commander of the Monadnock Regional Special Response Team. He has extensive experience and associated training in illegal drugs; undercover drug work. Terry also has personal experience in dealing with a loved one with an addiction problem. He seeks solutions to the drug problem through compassion and cultural perceptions of those fighting addiction diseases. He serves on the Board of Directors for Reality Check, a nonprofit in Southwestern NH offering drug and alcohol prevention, intervention, treatment, and recovery services to residents.

Our Mission:



www.MSAafety.com
800.MSA.2222

That men and women may work in safety & that they, their families and their communities may live in health throughout the world.

Services for Industry

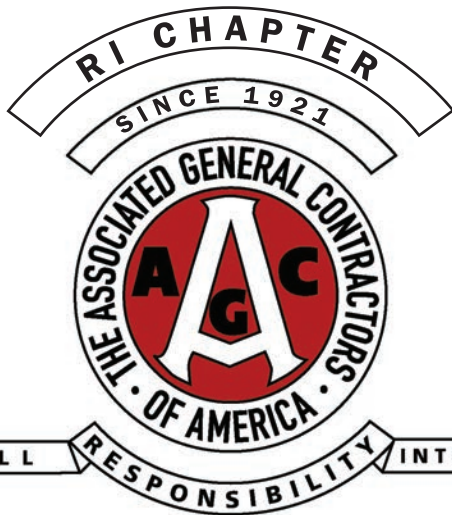
A leader in engineering and environmental consulting services, including ESH regulatory compliance support, site assessments, hazardous building material assessments, environmental permitting, and wetland and ecological services.



Tighe&Bond

Engineers | Environmental Specialists

53 Southampton Road | Westfield, MA 01085 | 413.562.1600
www.tighebond.com



260 W Exchange St,
Providence, RI 02903

(401) 454-1990

EBC Consulting

environmental | engineering | due diligence

REACH BEYOND COMPLIANCE

Get ahead of the curve with proactive environmental health & safety, sustainability and training solutions.



Industrial Hygiene • Noise Assessments • Air Quality
Personal Protective Equipment • OSHA Compliance
Health and Safety Training • Wastewater and Stormwater
Site Investigation and Remediation • LEED Certification
Construction Consulting Services • Risk Management
Brownfields Development • Hazardous Waste • Chemical Toxins

EBC Consulting | 21 B Street | Burlington | MA 01803 | 781-273-2530
www.ebiconsulting.com | info@ebiconsulting.com



University of
Massachusetts
Lowell

Learning with Purpose

The New England Consortium
Worker Health and Safety Training

Project Partners:

UMass Lowell ▪ ConnectiCOSH ▪ MassCOSH
▪ NH COSH ▪ RI COSH ▪ Western MassCOSH

p: 948.934.3257 | www.uml.edu/t nec



Making Your Business Visible
Your LOGO on Everything!

We are a 26 year old business, providing large, medium, and small companies embroidered, screen printed corporate apparel and safety wear. In addition, Corporate Images is a major supplier of promotional products.

Apparel:

*Corporate ▪ Safety ▪ Flame Retardant ▪ Industrial
▪ Embroidery ▪ Digital Printing ▪ Screen Printing*

Printing Services:

*Business Cards ▪ Brochures ▪ Postcards
▪ Banners ▪ Labels ▪ And so much more!*

corporateimagesnh.com | 603.293.9143 | roberta@corporateimagesnh.com



Your One Source
Full Service Provider

For over 40 years Maybury has been designing, supplying, and servicing all types of material handling equipment throughout New England.

Maybury is your full-service material handling provider.

90 Denslow Road • East Longmeadow, MA • 01028
(413) 525-4216 • contact@maybury.com



www.maybury.com



14 Payson St. | Newburyport MA 01950

Sales Solutions represents leading manufacturers in the areas of PPE, fall protection/confined space, and traffic safety:

- Falltech for working safely at heights
- ML Kishigo for staing visibility in working conditions
- West Chester protective Gear for compliant hand protection
- RKI Instruments for gas monitoring in confined spaces.

We look forward to being your resource!

www.SalesSolutionsInc.net



Industrial Hearing Testing (IHT) offers mobile, on-site hearing testing, training and noise measurements. We have the capacity to test 8 people at one time on board our mobile units.

Available throughout all of New England, New York, Pennsylvania, and New Jersey.

industrialhearing.com | 508.832.8484



HEARING & RESPIRATORY PROTECTION

**7800 SERIES
PREMIUM
SILICONE
RESPIRATOR**



**AIRWAVE
DISPOSABLE
MASKS**



**GLIDE
TWIST-IN
EARPLUGS**



FREE TRIAL FOR QUALIFIED USERS

www.moldex.com/oshasummit



Safety Inc.
Since 1970
www.ESafetyInc.com

Industry leaders in New England since 1970.

Safety, Inc. is a distributor of safety equipment and portable instrumentation, providing installation, repair, and calibration services.

Many of our customers have done business with Safety Inc for over 30 years, reflecting our high level of service at competitive prices.

sales@esafetyinc.com | 800.462.1103



2510 West Casino Rd. | Everett WA 98204

Discover the variety of personal protective products available from Majestic.

We are one of the nations leading suppliers of gloves, protective clothing and boots, and known throughout the industry for offering superior quality products to the safety, construction, fire protection and industrial trades.

www.majesticglove.com

Anywhere. Everywhere. VF Imagewear, Inc.



We Fit Your Life.™



BulwarkFR®

Bulwark is the only FR brand that brings 45 years of front line experience, understanding, and insight to the table - and that outfits you with the finest, most advanced and intuitively designed FR apparel ever made. It also surrounds you with the industry's premier FR education programs and consultative services.

You are armed with the world's best.

Red Kap • Bulwark • Horace Small • Imagine It • Lee • Wrangler

www.vfimagewear.com

American Safety & Supply

Two great companies working together to provide safety equipment solutions.

- Confined space equipment
- FR/ARC apparel
- Hi visibility
- Road work safety
- AEDs
- Respirator fit testing
- Gas meter sales, service, & rentals
- Much more!

American Safety & Supply: 800.472.3892

Custom Safety & Apparel: 413.237.3587

CW Hayden

Industrial & Marine Specialists

Quality Products and Professional Service Since 1948

At C.W. Hayden we pride ourselves with providing top quality service for all of our customers. We are now proud to add to that high level of service with our new and improved website. With our new cwhaydenonline.com website we now offer expanded product lines and improved search and navigation functions and much more.

Visit our new site: www.cwhaydenonline.com | or call 800.333.2054



3M Premier Service Industrial Products Distributor

3M

The New 3M™ Versaflo™ TR-600 Powered Air Purifying Respirator

The new TR-600 takes the entire Versaflo system to new levels of confidence, control and comfort. Representing an advanced evolution of technology with increased excellence in powered air respiratory safety, your world of protection just expanded and is better than ever.

[MORE INFORMATION](#)



**Best Trained.
Most Experienced.
Best Equipped.**



LEADERS IN CONFINED SPACE RESCUE

800.244.1238

www.IndustrialSafetyRescue.com



Workplace Safety SOLUTIONS, INC.

www.workplacesafetysolutions.com
802.288.9441

Workplace Safety solutions, Inc. is a consulting group of Associates with expertise in OSHA, EPA, and DOT regulations.

Our specialty is electrical safety for all industries.

We provide written programs, on-site risk assessments and training, field audits and engineering arc flash studies.



Integrating design, construction and passivation services to Pharmaceutical, BiPharm Bio-Tech, Chemical, Industrial, Wastewater and Power Generating industries; adding value through our commitment to safety and quality.



Hart Engineering is the Construction division of The Hart Companies. Since 1941, Hart Engineering has been recognized as a leader in the management and construction of extremely complex projects. Whether Hart is performing in the Pharmaceutical, Bulk Pharmaceutical, Biotech, Fire Chemical, Microelectronics, Water and Waste Treatment or Power Generation industries, Hart provides excellence.

Hart's broad range of experience includes:

- Process Industrial Piping
- High Purity Piping
- Modular Construction
- Hygienic Piping
- General Contracting
- Design/Build
- Construction Management
- Program Management

Quality, Innovation and Integrity... Since 1941

Highland Corporate Park, 800 Scenic View Dr., Cumberland, RI 02864 • Tel: 401-658-4600 • Fax: 401-658-4609

HILTI

284 Murphy Rd. | Hartford CT 06114

At Hilti, our people and products are with you every step of the way. From design to demolition, we support you with expert technical advice, reliable products, prompt delivery and outstanding service from a team of highly trained professionals.

www.US.Hilti.com | 802.288.9441

Airgas®

an Air Liquide company

GASES SUPPLIES

Cylinders • Liquid Cylinders • MicroBulk
• Bulk • On-Site Generation

FOR THESE INDUSTRIES:

- Construction
- Metal Fabrication
- Life Sciences Healthcare
- Food & Beverage
- Retail
- Energy & Chemicals
- Primary Materials

AIRGAS.COM | 866.935.3370




Viz Reflectives
North America

829 Turnpike Rd. | New Ipswich NH 03011
vizreflectivesna.com | 603.291.0730

- Reflective Signage ▪ Streets Ahead
- VizLite® Reflective Tapes ▪ Reflect and Protect
- YSL VizLite® Reflective Branding ▪ Make your Mark
- Optilux™ Reflective Inks and Transfer Systems ▪ A Revolution in Reflectives
- YSL M-Lite® Reflective Sheeting ▪ Perfection in Reflection
- Mbeads® Micro Glass Beads ▪ Mirror Image

3M Science.
Applied to Life.™



3M PPE Safety Solutions:

From the most basic to the most specialized needs, 3M offers the health and safety protection you and your workers need most, so everyone can perform at their best.

Visit: 3M.com/worksafety | 860.770.9521

HARRISON SHRADER ENTERPRISES
HSE
FIRE/SAFETY EQUIPMENT

"We make it our business to keep you safe."

HSE (Harrison Shrader Enterprises, LLC) offers over 75 combined product lines pertaining to First Responders (Fire, EMS, Law Enforcement) as well as the Industrial/Commercial safety markets.

Communications Equipment ▪ Extrication Equipment ▪
Fire Suppression Equipment ▪ Gas Detection ▪ Hand Tools ▪
Ice Rescue ▪ Lighting Products ▪ Personal Protective Equipment
▪ Rescue Equipment ▪ Rit & Rope Thermal Imaging ▪
Water Products ▪ Ventilation Products ▪
Additional Product Lines

HSEfiresafety.com | 207.241.0325


AGC of Massachusetts
THE ASSOCIATION OF COMMERCIAL & INSTITUTIONAL BUILDERS

888 Worcester St, Ste 40 | Wellesley MA 02482

Providing powerful programs, services, and initiatives that strengthen competitive advantage and promote the economic strength of the commercial construction industry.

Building Excellence. Encouraging the use of new technology and safe working environments through education and training.

www.agcmass.org | (781) 786-8917



Thank you to to all our committee members



OSHA's premier technical training near you

www.OSHAedNE.com | 800.449.6742

Construction • General Industry • Utilities
• Maritime • Disaster Site Work



Wisdom to make a difference.



Created in 1970 to assure safe and healthful working conditions for working men and women by setting and enforcing standards and by providing training, outreach, education and assistance.



Massachusetts Department of Labor Standards
OSHA Consultation Program
www.mass.gov/dols/consult



Free Workplace Safety & Health Consultation Service

www.mass.gov/dols/consult | 508-616-0461



*Safety Council of
Western New England*

www.scwne.org

800.359.9717



UMASS
AMHERST



ehs.umass.edu

413.545.2682



Connecticut Valley Chapter

American Society of Safety Engineers

Serving Connecticut and Western Massachusetts

Safety Leadership in the 21st Century

ctvalley.asse.org